

*We keep snow in its place*  
[www.alpinesnowguards.com](http://www.alpinesnowguards.com)  
888.766.4273



# ALPINE SNOWGUARDS®

Snow management solutions  
for **ALL** roof types, new or retrofit

Ledge/Cornice

**NEW**



Standing Seam



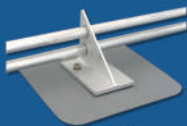
Corrugated



Slate & Shingle



Membrane



Tile



Solar Arrays



Copper



*We keep snow in its place*  
[www.alpinesnowguards.com](http://www.alpinesnowguards.com)  
888.766.4273

## What We Know

Our team is comprised of exceptionally talented individuals whose collective knowledge and technical aptitude greatly contribute to Alpine's success.

If you have questions, call, email or write us on social media. We're always happy to help.

Below are some of the more common questions we're asked here at Alpine (with answers):

### **Can Alpine SnowGuards be installed on an existing roof?**

Yes, we have a wide variety of snow guard options that are compatible with existing (retrofit) roofs or new roof construction.

### **Do snow guards keep all the snow and ice on the roof?**

No. Our snow guards are specifically designed to prevent entire roof loads of snow from dumping or avalanching all at once. Small amounts of snow and ice will still melt off.

### **How many snow guards do I need for the project?**

This depends on several factors including roof slope, rafter length, building orientation and snow load.

### **Will snow guards prevent icicles from forming?**

Inadequate insulation, air leaks and improper ventilation can cause a build-up of water between the snow and the roof surface, resulting in the formation of icicles. Snow guards will not prevent icicles from forming.

### **Who should install snow guards?**

We recommend installation by trained professionals, such as roofing contractors or gutter installation companies.

### **Where can I purchase Alpine SnowGuards?**

Our snow guards are available directly from Alpine SnowGuards, as well as through many building supply companies and distributors throughout the U.S. and Canada. If you are looking for a distributor near you, please call us at 1-888-766-4273 or email [info@alpinesnowguards.com](mailto:info@alpinesnowguards.com)

[info@alpinesnowguards.com](mailto:info@alpinesnowguards.com)



*We keep snow in its place*  
[www.alpinesnowguards.com](http://www.alpinesnowguards.com)  
888.766.4273

## Alpine LedgeGuard

**NEW**

Extensive performance and large climatic chamber testing (testing performed by Microclimate Ice and Snow at the University of Ontario Institute of Technology)

Framed building envelopes (curtain walls) have become increasingly common in the building industry as a way to move towards thermal-efficiency in order to improve on the overall energy performance of a building and to reduce greenhouse gas emissions.

While this improvement is necessary, the unexpected consequence of the formation of ice and snow on the exterior of buildings needed to be addressed.

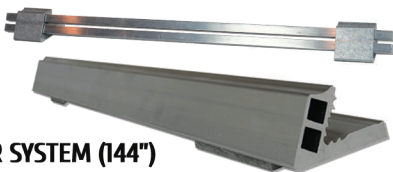
Alpine has you covered.

We've engineered and tested several snow management solutions for application on urban ledges, cornices, parapets and sloped walls, to protect people and property on busy streets and sidewalks below.

**ALPINE LEDGE-1.5"**

**ALPINE LEDGE-12"**

**ALPINE LEDGE-BAR SYSTEM (144")**



[info@alpinesnowguards.com](mailto:info@alpinesnowguards.com)



*We keep snow in its place*  
[www.alpinesnowguards.com](http://www.alpinesnowguards.com)  
888.766.4273

## Snow Guard Styles

### **PAD**

Pad-style snow guards add friction to a frictionless surface, preventing a sudden avalanche of ice and snow. Traditional pad-style snow guards feature our "fish head" design, which provides optimum strength while maintaining aesthetic integrity. Since our pad-style snow guards are riveted, there is no risk of unfolding. Pad-style snow guards are widely used for both residential and commercial applications.

### **PIPE**

Pipe-style snow guards act as barricade systems, preventing large pieces of snow and ice from falling off a roof. Precision engineering makes our pipe-style snow guards not only extremely durable, but beautiful as well. Our pipe-style snow guard assortment includes two-pipe and three-pipe systems, as well as several height adjustable bracket options to accommodate a wide range of roof pitches. Originally used for commercial applications, many homeowners are now choosing pipe-style snow guards when making a conscious decision to protect their home's immediate surrounding area from falling snow and ice.

### **FENCE**

Fence-style snow guards also act as barricade systems, preventing large pieces of snow and ice from falling off a roof. We designed our fence-style snow retention systems, SnowMax & Solar SnowMax to be the strongest fence-style systems on the market. Fast and easy to install with bracket spacing up to 48" on center, our fence-style snow guards are fabricated from aircraft-grade aluminum, resulting in extremely rugged products. Available in attachment options suitable for all roof types.

### **SOLAR**

Why is solar snow management necessary? The calculated snow load of a solar panel is approximately 800 lbs/panel (50 lbs/sf x 16 sf average per panel). Solar panels (by their nature, glass/hard roof surface, no friction) allow built up snow to release in an avalanche manner, with the potential to cause serious injury, damage or even death.

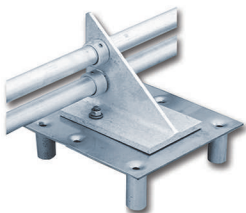
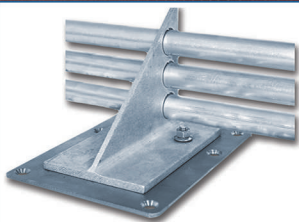
[info@alpinesnowguards.com](mailto:info@alpinesnowguards.com)





*We keep snow in its place*  
[www.alpinesnowguards.com](http://www.alpinesnowguards.com)  
888.766.4273

## Roof Type: Membrane

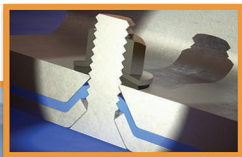


PP115 and PP115R



SnowMax-Membrane

Cross section of our  
patented watertight seal



[info@alpinesnowguards.com](mailto:info@alpinesnowguards.com)



*We keep snow in its place*  
[www.alpinesnowguards.com](http://www.alpinesnowguards.com)  
888.766.4273



*We keep snow in its place*  
[www.alpinesnowguards.com](http://www.alpinesnowguards.com)  
888.766.4273

## Roof Type: Metal



### Standing Seam



ASG33G



Alpine  
SimpleGuard



SnowMax-  
Standing Seam



ASG4025 & Mini



PD82



ASG2000B-Mini



PD30

### Corrugated

#### SnowMax-Corrugated



PP315



PP145



PD80

[info@alpinesnowguards.com](mailto:info@alpinesnowguards.com)



*We keep snow in its place*  
[www.alpinesnowguards.com](http://www.alpinesnowguards.com)  
888.766.4273

## Roof Type: Shingle/Shake



**FUSION-GUARD**



**PD10**



**PD11**



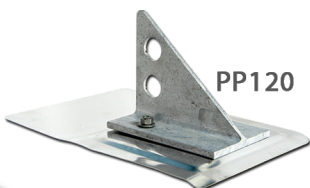
**PD40**



**PD50**



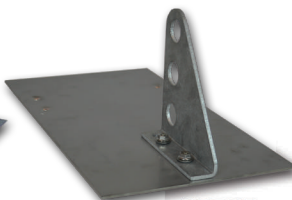
**PP125**



**PP120**



**PP225**



**PP325**

[info@alpinesnowguards.com](mailto:info@alpinesnowguards.com)





*We keep snow in its place*  
[www.alpinesnowguards.com](http://www.alpinesnowguards.com)  
888.766.4273

## Roof Type: Solar



*Frame-mounted solutions,  
designed by snow management  
industry experts*



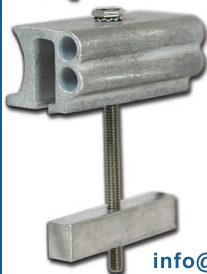
### **Solar SnowMax-R2**

- Installs on eave-edge of array
- Highest fence option (2")
- Accepts color insert strip
- Frame-mounted



### **Solar SnowMax-Standard**

- For additional upslope tiers
- Frame-mounted (1.375" fence)
- Accepts color insert strip



### **Solar Snow Pad**

- For additional upslope tiers
- Accepts 2 optional 3/8" rods
- Frame-mounted

[info@alpinesnowguards.com](mailto:info@alpinesnowguards.com)



*We keep snow in its place*  
[www.alpinesnowguards.com](http://www.alpinesnowguards.com)  
888.766.4273

Alpine SnowGuards is your source  
for CUSTOM snow guard designs



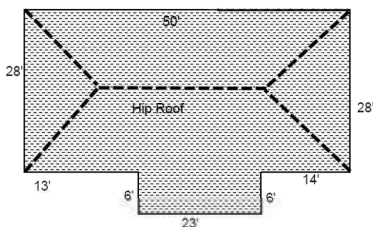
Ask about our in-stock and custom solutions  
for managing snow on all roof types!

[info@alpinesnowguards.com](mailto:info@alpinesnowguards.com)



*We keep snow in its place*  
[www.alpinesnowguards.com](http://www.alpinesnowguards.com)  
888.766.4273

Have you used our  
**ONLINE PROJECT CALCULATOR?**



Sign up for an immediate layout  
and project pricing  
You can also order online!

SCAN OUR QR CODE  
& START USING  
IT TODAY!



**FOR THE A/E/C COMMUNITY**

**DATA RICH AUTODESK® REVIT® BIM OBJECTS**  
**ARE NOW AVAILABLE RIGHT ON OUR WEBSITE!**



*In addition to accurate graphics, appropriate product data  
has been added to each object, saving architects and engineers  
a significant amount of time on product research and data entry.*

[info@alpinesnowguards.com](mailto:info@alpinesnowguards.com)





A Division of Vermont Slate & Copper Services, Inc.

Alpine SnowGuards® • 289 Harrel St. • Morrisville, VT 05661  
Toll free phone: 888.766.4273 • Toll free fax: 888.766.9994  
email: [info@alpinesnowguards.com](mailto:info@alpinesnowguards.com)

FOR MORE INFORMATION, VISIT US ONLINE!

[www.AlpineSnowGuards.com](http://www.AlpineSnowGuards.com)



*Alpine SnowGuards designs, engineers, and manufactures snow management systems from our facility in Morrisville, VT.*

*We work closely with leading roofing contractors, engineering firms, developers, and roofing manufacturers to ensure we deliver quality products that do what we say they'll do.*