

## Metal Roof Design for Cold Climates

Northern climates have always posed unique challenges to all types of roofing material. Snow and ice pull and tug on roof membranes and over time can threaten to tear them apart. Freezing phenomena can pry flashings away from roofs, inhibit proper drainage, rip gutters from eaves, and even threaten personal safety at building perimeters. Another demand placed upon any roofing system by a cold climate is the wide range of temperatures to which it is exposed, producing exaggerated thermal movement and stress. Because materials change dimension in direct proportion to their temperatures, “thermal cycling” of the roof means that it constantly undergoes movement and stress.

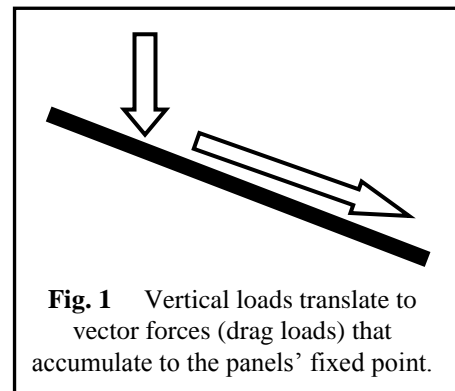
In these climates, roof temperatures can also change very suddenly causing dimensional changes in roof materials (thermal shock). In some higher elevations, ultraviolet exposure can be more severe than south Florida. Condensation control can also be quite a challenge as moist room-side air migrates to the colder roof and condenses, sometimes freezing. Roof design for sites that experience snowfall and freezing temperatures is an important consideration due to the special challenges that this type of environment poses for the roof.

Metal roofs have long been considered a product of choice for snow areas because of their superior response and tolerance to many of the characteristics of these environments. The following text is provided for informational purposes regarding the use of metal roofing in cold climates. It is the responsibility of the architect or project designer to determine acceptable products and roof design appropriate for any specific project or end-use. It is not the purpose of this document to address load requirements for structural design purposes, or to address the effects of drifting snow on roof design.<sup>1</sup> This document will provide the designer with the information required to make a

prudent and informed decision through awareness of some general design parameters and snowmelt phenomena.

### Effects of Gravity Loads Induced by Snow

When snow blankets a roof, a strong, adhesive bond occurs between the snow blanket and the metal roof panels. This adds a vertical load to the roof surface that is translated to a vector load parallel to the panels’ surface. This is sometime called a “drag load”, or “gravity load” (Figure 1). This load represents forces that attempt to pull a panel down the slope of the roof. In cases of small, unitized metal roof products, or products which have multiple points of positive fixity, vector loads are distributed over each attachment and do not have a cumulative effect.



Most popular “standing seam” and similar type products are designed with “floating” attachments that enable the panel to respond freely to thermally induced stresses. These types of panel designs involve a singular point of attachment, or “fixity”. This is the point at which the panel is rigidly attached to the structure or substrate and thermal movement accumulates from that point. All other attachments would be “floating” or sliding in

nature. With this type of a design, the vector loads of a snow blanket on the roof's surface accumulate to that single point. Attachment at that single point must be adequate to resist the loads that are accumulated.<sup>2</sup>

Calculation of the vector load is found by multiplying the vertical load by the sine of the roof angle. (Figure 2 can be used to find the degree of pitch and resulting sine of common roof slopes.) The resulting vector loads for the entire length of the panel from eave to ridge are tributary to its fixed point and the fastening thereof. The total vector force is normally expressed in pounds per linear foot (in a perpendicular direction to the roof slope) hence it is found by multiplying vector force (in pounds per square foot) by the roof length (in feet from eave to ridge dimensioned in plan view [also known as the "roof run"]).

SINE OF ROOF ANGLES		
SLOPE:12	DEGREES	SINE
1	4° 45'	0.08305
2	9° 28'	0.16441
3	15° 0'	0.24272
4	18° 30'	0.31623
5	22° 30'	0.38462
6	26° 30'	0.44721
7	30° 15'	0.50387
8	33° 45'	0.55470
9	36° 45'	0.60000
10	39° 45'	0.64018
11	42° 30'	0.67572
12	45° 0'	0.70710

**FIG. 2**

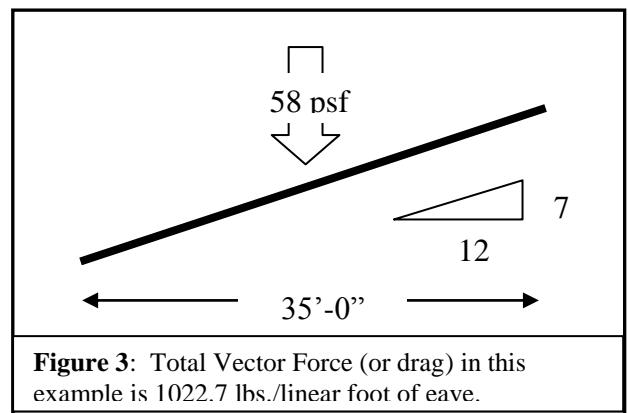
**Example:**

A roof is 35 feet (in plan) from eave to ridge. The design (roof) snow load is 58 pounds per square foot (psf), and the slope of the roof is 7:12. (A 7:12 slope translates to 30° 15'. The sine of 30° 15' = 0.50387)

Vector Load = 58 psf (0.50387) = 29.224 psf

Total Vector Force = 29.22 psf x 35 ft. (roof length)

= **1022.7 pounds per (linear) foot along fixity point**



In calculating the vector forces that act upon the fixing of the panel, several factors should be considered:

1. The roof design snow load, not ground snow, should be used in these calculations. The roof snow (vertical load) is often reduced from ground snow by some factor. The basis of this reduction is that wind scouring normally reduces the depth of snow on a roof as compared to ground accumulation. Most local design codes provide reduction multipliers for this purpose.
2. The vector loads are actually reduced by the coefficient of friction between metal coverings and the material the covering bears upon, like asphalt felts or roof insulation. Although this coefficient can be substantial for some materials, it is almost nonexistent for others. For instance, if a slip-sheet is used beneath metal panels, its very purpose is to minimize friction between metal panel and substrate. Often, because this coefficient is unknown, it is not utilized (assumed to be 1.0) in calculation.
3. Shear values for common threaded fasteners into various substrates are available from the fastener manufacturers. When a panel is fixed via threaded fasteners, the published or tested shear value of the fastener is normally compared against the total calculated vector force expected to determine the fastener frequency, or spacing. Using the foregoing example, the vector load

was found to be 1023 pounds per linear foot. If a published (allowable) shear load were, 340 pounds, then fastening would be required every four inches, or 0.33 feet ( $340/1023 = 0.33$ )

4. Safety factors are used when designing a connection based upon calculating the design failure load of any attachment. Appropriate safety factors are utilized at designer/engineer discretion. Most screw manufacturers recommend a safety factor of 3 to 4 times to obtain allowable shears from ultimate shear values.
5. Caution should be exercised when roof and wall geometries create aerodynamic shade resulting in drift loads on roof areas. This may occur on roofs adjacent to parapet or other wall conditions that extend above lower rooflines. Such conditions can increase roof loads significantly (see Figure 4). When a lower roof has an eave above that is not protected with snow guards, the discharge of sliding snow can also cause increased loading to the lower roof. A determination must also be made with respect to the using uniform or non-uniform loads in design. Building codes should be consulted and appropriate engineering standards and calculations used to determine the actual in-service roof loads in all cases.
6. When determining slope for a barrel vault, use an imaginary straight line from eave to apex to represent theoretical slope unless a more detailed evaluation is available.

## Snow - Melt Phenomena

Snow melts on a roof due to several factors. Each factor can have different effects on resulting activity, and snow often thaws from multiple causes simultaneously. The following explanations of snowmelt phenomena are not unique to metal roofing, but are similar on all types of roofing. In some cases, the effects of these snowmelt patterns may be different for metal roofing, but in most

cases, they are similar regardless of the roof material type.



**Figure 4: Some building and roof geometries can create “drift loads”**

### Ambient Thaw

The first (and most obvious) cause of snowmelt is simply the temperature of ambient air. When snow accumulates on a roof, ambient air is typically at or below freezing. As ambient air rises above freezing, the snow blanket melts from the top down. Often, an incidental phenomenon is that the snow will develop a “crust” from this type of thaw.

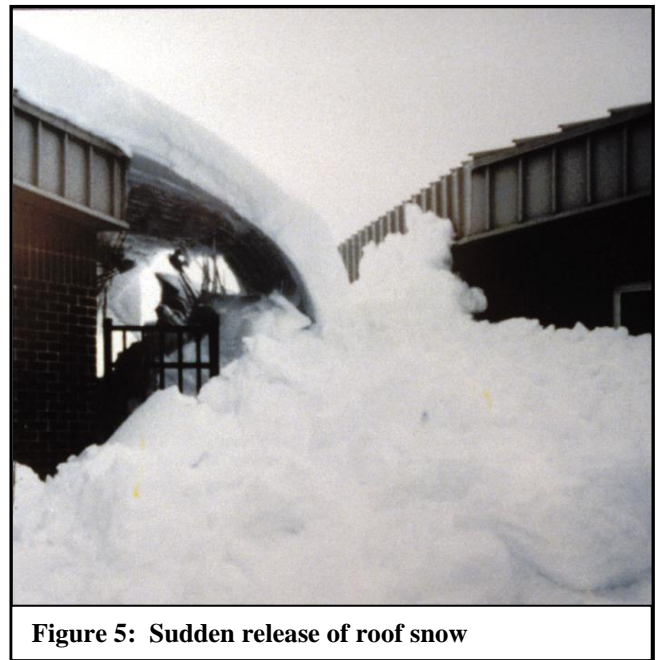
The crust occurs because the outer surface of snow blanket melts and the melt-water begins to migrate downward into the blanket that acts somewhat as a sponge. When ambient temperature again drops, the outer layers of snow bank, which has retained liquid water, re-freeze causing a denser and more solid surface “crust”. This mode of thaw passes the melt-water from the top down and can increase the density of the blanket in the same direction. Except for a small amount of water that may evaporate during this process, the moisture and its weight are still present, however dimensionally the depth of the blanket is reduced. A side effect of

this crust is significant tensile strength/cohesion binding the snow blanket to itself as a unit.

## Solar Thaw

Other snowmelt phenomena occur in the opposite direction, from the bottom up, and happen due to two different causes. First, snow is somewhat translucent and can experience solar thaw. The non-reflected solar energy that strikes the roof surface through the blanket of snow converts to heat and raises the temperature of the roof surface. As the temperature rises, the snow blanket melts from the bottom up. This melt phenomenon is actually more common and frequent on most roofs than ambient thaw. It also can occur even on cloudy days when ambient air temperatures are well below freezing. Under normal circumstances, melt-water resulting from solar thaw will drain freely from beneath the snow blanket. The lower portion of the blanket, however, will absorb some of this melt-water, thus increasing the density of the blanket from the bottom-up. This phenomenon is the most common, particularly when the roof is a dark color and has a high solar absorption value. This type of solar thaw can also have some side effects of which the building owner or designer should be aware. The first is sudden release of snow from the rooftop.

When snow accumulations blanket a roof at low temperatures, a strong but temperature-sensitive adhesive bond is formed between roof and snow. When sunlight warms the surface of the roof, not only is that bond broken, but the roof surface is also lubricated by melt-water, greatly diminishing any frictional resistance between the snow and roof. This often results with the entire vector force of the snow blanket experienced at the ridge area. The force usually exceeds the cohesive (or tensile) strength within the blanket, and the blanket splits at the ridge area. This can cause a sudden release of the entire accumulation of snow from the roof. (Figure 5) Also see “Design Considerations with Respect to a Snow Shed”



**Figure 5: Sudden release of roof snow**

When snow is retained on a roof, either by design, or due to the physical geometry of the roof, solar thaw can also pose special drainage considerations. Because this type of thaw occurs when ambient air is well below freezing, the melt-water that drains from the roof can quickly re-freeze. This is especially true if it drains to a surface with different solar absorption characteristics than the roof. It can also occur if the new surface is shaded from sunlight. An example might be a walkway or landscape that is shaded from sunlight by the building wall or nearby trees. The roof is warmed, snow melts, melt-water leaves the warm surface of the roof and falls to the ground. If the ground is below freezing, the melt-water will quickly re-freeze.

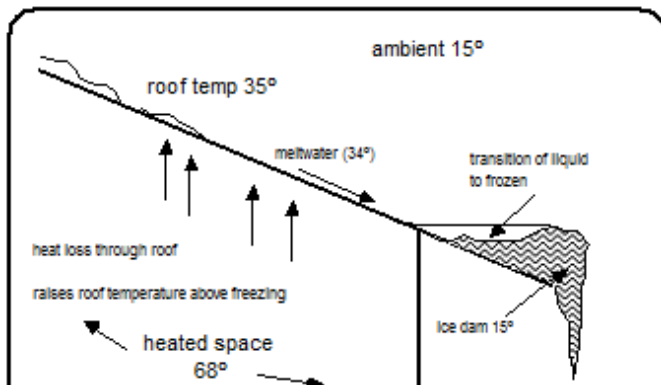
Similarly, if the eave is drained via guttering, and the gutter or down piping is a lighter color or shaded from sunlight, the gutter or down piping can freeze, burst, or otherwise fail. This problem can be alleviated to some degree in a number of ways. Gutters and down piping, if exposed, can be a color the same as, or darker than, the roof itself. With a higher solar absorption characteristic gutters and down piping will be warmer than the roof surface



from which the melt-water is shed. If possible, avoid locations or designs that will result with shading of these components. Additionally, open-faced downspouts can be utilized. This will not necessarily prevent freezing, but may provide relief from freeze-bursting. Heat tracing the down piping, or routing it inside the building wall in a heated interior, is another alternative.

### Heat Loss Thaw

The second major cause of snowmelt is heat from within the building escaping through the roof construction, warming the surface of the roof to temperatures above outside ambient air. This mode of snowmelt is not uncommon, but perhaps the least desired because this phenomenon can cause inconsistent temperatures in various areas of the roof. Differing roof temperatures can cause thawing and re-freezing of melt-water in a downslope area, the most common of which is the eave condition shown in Figure 6A.



**Figure 6A: The process of eave icing**

Ice on a roof can have extremely damaging effects. The incredible force of freezing water is known to break solid steel engine blocks—and can certainly wreak havoc on a roof.

Constant re-freezing of melt-water, whether at the eave or some other roof area can accumulate to significant depths, forming ice dams. (This phenomenon happens on all types of roof and is by no means unique to metal roofing.) Aside from potential mechanical damage to the roof itself, an ice dam can have several other effects on a roof.

First, an ice dam will create rather unpredictable snow retention (Figure 6B). In this case, the bond of the ice to the roof is sufficient to withstand vector forces of snow blanketing the roof.



**Figure 6B: Ice dams create unintentional snow retention**

This bond is temperature sensitive. When conditions change it can be broken causing a sudden release of both the ice and snow blanket, which may create a potential hazard to anything below the eave. Second, the ice dam is quite effective at retaining liquid melt-water on the roof upslope and adjacent to the ice formation (see Figure 6A). This liquid melt-water can submerge upslope roof construction. Depending upon the infiltration characteristics of that construction, leakage and other sub-roof water or freeze damage may occur. The third effect of icing is the point-loaded weight of the ice bank. Ice weighs about 5 pounds per foot per inch of thickness. Many structures and roof materials are not designed to support an ice build-up of several feet, which has been observed on some roofs.

## Design Considerations with Respect to Icing

Icing conditions are never desired on any roof. While it is impossible to ensure that icing will never occur under any circumstance on a given roof, it is possible to reduce the likelihood. In a general sense, the icing tendencies of a roof will be greatly reduced if solar thaw modes rather than building heat thaw modes can be induced. This can be accomplished best by a combination of basic design factors:

1. Use a roof color that has a high solar absorption value. A prepainted metal roof with conventionally formulated dark colors such as red, brown, gray, green or blue will achieve much higher surface temperatures than lighter colors such as white and beige. However, special cool pigmented dark colors are also available that can lower the surface temperatures.
2. Orient the direction of the roof planes to face an east-west rather than north-south direction. This ensures that they will have exposure to the sunlight, at least for part of the day.
3. Utilize “cold roof” designs, like a vented attic. By keeping the attic space cooled with outside air, the escaped building heat is vented to the outside, rather than warming the roof from beneath.
4. Insulate the ceiling adequately. The more insulation, the less building heat loss to the underside of the roof.

Ideally, the perfect roof geometry for cold and snowy climates is a steep slope, southerly facing, simple shed roof design that is free of dormers, valleys, parapets, transition walls, and roof penetrations. Such simple and uniform geometry can help eliminate significant drifting as well as unpredictable shaded areas on a roof that may be prone to icing. Another design concern is to avoid large overhang areas that protrude outside the

insulated building envelope. This avoids a “cold eave” situation that promotes icing.

When these criteria are met, the tendency for icing at best will be eliminated - at worst, greatly reduced. If complete compliance with the above design suggestions cannot be met, then compliance with as many items as possible will certainly improve chances for an ice-free roof. One area of compliance can go a long way toward forgiving breach of another. For instance, if the building design incorporates a vaulted ceiling so that a cold attic design is not practical, then extreme levels of insulation in the ceiling construction and the use of a solar absorptive color for the roof will go a long way toward forgiving the absence of attic ventilation and “cold roof” design. Other techniques can also be used to mitigate non-compliance with some of these criteria. If overhangs are used, but some building heat can be directed to escape into the soffit area beneath that overhang, the building heat loss may alleviate the “cold eave” situation and help to keep it thawed.

### De-icification Cabling

When icing is imminent and the ice reduction criteria are exhausted or not possible, another solution, outside of changing design, is to provide mechanical/electrical means to induce thaw and prevent or reduce the negative effects of icing on the roof system. A self-regulating heating cable is often a favored solution in such instances (Figure 7).



Fig. 7: De-icification cabling integrated with snow

When cables are surface mounted, care must be taken not to cause unwanted holes through the roof membrane during installation. Snow retention systems must also be incorporated to prevent migrating snow from tearing the heating cables from the roof surface. Heat cabling is often used, not to totally alleviate the icing phenomenon, but to mitigate the negative effects due to static water pressure behind the ice dam and mechanical damage to seams and joints. Cabling is normally arranged adjacent to seams and extends from the warm area of the roof (just above intersection of the wall line to the roof) to the eave edge. Cabling may not keep the eave entirely ice-free; however it provides a liquid melt-water channel for drainage.

When guttering is utilized in addition to heat cabling, it may be beneficial to extend heating cables through the guttering, down the drain piping, and below the frost line. Alternatively, guttering can also utilize the solar thaw solution if gutters and down piping will have long periods of exposure to direct sunlight. Using a very dark color for these elements will help to keep them thawed without heating cables. Since this method is not 100% reliable, another option is the use of open-faced downspouts. If a downspout freezes at some point, it generally will not burst. Another drainage design sometimes employed in severe alpine environments is the use of a chain, in place of a downspout.

### **Underlayment Upgrades**

A practice favored by many designers in ice and snow country is to utilize a “peel and stick” modified bituminous sheet at troublesome areas such as eaves, valleys, and transition areas. Such diligence in underlayment anticipates occasional hydrostatic pressure behind dense snow and ice. When using this type of product, additional attention should be given to several details:

1. Be sure that the softening (or flow) point of the material used is appropriate. Solar absorptive colors can result in roof temperatures near 200 °F. Metals with low gloss finishes, such as copper, lead, and zinc can result in temperatures

over 200 °F. Popular rubber-modified asphalts may have softening temperatures in that same range. This means that asphalt could flow from beneath the panels under the hot summer sun.

2. When using such membranes at cold (icing) eaves, the membranes should be extended from the outer extremity of the eave to a distance of at least 30 inches inside the heated building envelope. For example, if a cold eave overhang extends 24 inches outside the building wall, the membrane should be at least 54 inches in coverage.
3. If metallic coated steel panels are used over a modified asphalt granular surface, a slip-sheet should be incorporated between the surfaces to prevent abrasion to the underside of the roof panel as it moves thermally. According to the Copper Development Association, if copper is used, a slip sheet should be incorporated regardless of the surface of the membrane.
4. It is a mistake to rely too heavily upon this membrane for weather protection. If water is infiltrating to the panel underside on a frequent or prolonged basis, it can accelerate corrosion of coated steel products from the un-exposed side. It can also freeze, heaving panels and causing other kinds of damage.

### **Design Considerations with Respect to Snow Shed**

When possible, it is considered appropriate to let snow shed at will from a low-rise roof. However, if not anticipated during design, it can also be very inconvenient, destructive, or both. Locations of ingress and egress, as well as parking should anticipate this snow slide. Building entrances should be beneath gables, and not eaves. Pedestrian and vehicular traffic patterns must be routed away from potentially dangerous snow-shed zones. Any permanent structure or fixture within the trajectory of sliding snow must be designed to withstand the anticipated impact. This includes lower roof planes, other construction, incidental mechanicals,



landscaping and vegetation. When possible, eave areas should be made inaccessible to pedestrian and vehicular traffic. Often this can be accomplished through creative landscaping. When it is not practical within the building design to provide for natural snow-shed, snow retention devices may be employed.

In heavy snow areas, and designs that provide for snow-shed at will, “drop zone” accessibility for periodic snow removal is another consideration. Heavy accumulations on the ground against the building can cause damage to building walls. It can also inhibit proper site drainage, directing roof run-off and snowmelt-water into, rather than away from, building walls and foundations.

Due to higher unpredictability and the increased hazards associated with use of the “shed-at-will” philosophy on high roofs, snow retention devices should be utilized as part of the primary design. Only in carefully selected situations should snow retention devices not be included in the design of the building.

## Design Considerations with respect to Snow Retention

Serious accidents and even fatalities have resulted from rooftop avalanches. Shedding snow is also known to do serious damage to landscaping, lower adjacent roofs, and the paint finishes of standing seam roofs as it slides down the surface on the high quality factory finishes.

The first step in snow retention applications is to determine the loads that are to be resisted by the snow retention system. These are the same “drag” loads discussed earlier, (Effects of Gravity Loads Induced by Snow) and they are calculated by converting vertical roof snow to vector loads, then calculating tributary areas. (Ref. Figure 3) Safety factors should be utilized in accordance with normal design practices. The designer should also be aware of the appropriateness, applicability, and accuracy of the snow guard product testing making sure that the type of load, frequency and expected length of

performance (roof life) is considered.

Two different methods of snow retention are quite common. One method utilizes continuous horizontal components, assembled laterally across the roof in the style of a “fence”. (Figure 8A)



Figure 8A “Fence” type snowguard system

Such assemblies are usually installed at or near the eaves. Depending upon specific job conditions and load-to-failure characteristics of the devices, they may also be repeated in parallel rows up the slope of the roof, but with greater concentration near the eave area.

The second method of snow retention involves a snow guard that consists of small individual units used as “cleats” generally spot located at or near the eave. They also may be repeated in some pattern progressing up the slope of the roof, once again with greater concentration near the eaves. This style relies upon the shear strength within a snow bank to “bridge” between the individual units. (Figure 8B)



Figure 8B: “Cleat” type snowguard system



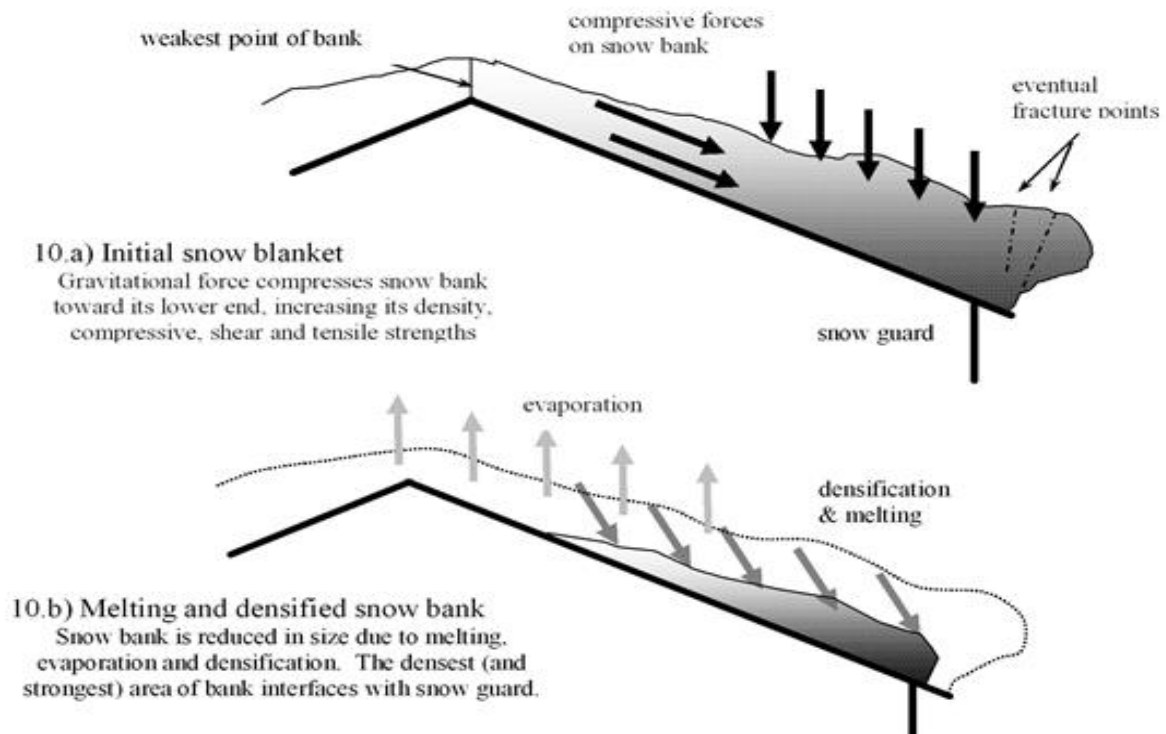
Both styles of snow guards (fence and cleat) have demonstrated satisfactory performance when designed and installed properly and adequately. The theory of all snow retention devices is to restrain or retard movement of a bank of snow by restraining its base; hence snow guard devices only a few inches in height have been used successfully even when snow banks are many feet in depth. It is common practice to concentrate multiple rows or units at the eave end of the roof. This practice has been used for centuries, and its success has to do with the densification and monolithic properties of snow banks. Snow banks densify in wedge patterns. As the snow bank compacts from thaw and its own weight, the densest layers (and therefore those with the greatest shear, tensile and compressive strengths) lie at its base, and toward its downslope end. Interface of snow retention devices at this location has proven to be strongly preferred and most effective worldwide (Figures 9 & 10).



**Figure 9: This project in Norway demonstrates appropriate placement of multiple rows, concentrated in the lower half of the roof**

Attachment methods also vary worldwide. Some devices are custom made to attach to the structure below the roofing, usually before roofing is placed. This type of device is usually designed on a job-specific basis. The weatherproofing of such a device while preserving thermal movement characteristics of panels can be a formidable challenge. Extreme caution should be used when such designs are incorporated due to the penetration of the device through the metal roof membrane, and the waterproofing problems that can be presented.

Other pre-manufactured, surface mounted devices screw through the roof and into the deck or the structure below. This practice is prudent for some roofs, but not for others. A face-fastened panel system has multitudes of penetrations, so the addition of a few more is consistent with roof design. Weatherproofing of such devices is of paramount importance, and the holding strength of the device to resist the vector forces will be highly dependent upon the nature and frequency of attachment. Generally speaking, such devices should not be used on panels that are designed to move thermally, such as standing seam roofs as the method of attachment would violate the freedom of thermal movement.



**Figure 10: the Process of Thaw and Densification**

Many pre-manufactured devices are soldered or adhesively mounted. Obviously, soldered devices can only be used on solderable metals that include copper and terne, but exclude coated steel and aluminum. Adhesively mounted devices of metal or plastic have also been widely used on many metal roofing materials. Although adhesive chemistries have changed over time, the one fact that remains true is that adhesive holding strength diminishes with age and normal exposure. Other variables that can also lead to adhesive failure include improper surface preparation and installation/curing under improper weather conditions.

Many of the recommended adhesives require minimum temperatures and other conditions throughout the curing process which can be as long as 28 days in some cases. This point alone may limit installation to specific times of the year. Attention must also be paid to the adhesive compatibility with some of the premium paint

systems used on today's metal panels whose chemical compositions render the surface with a rather "non-stick" characteristic.

Prior to consideration, adhesively mounted devices should be proven by testing that shows acceptable performance for the expected service life of the roof. It should be expected that both dynamic and sustained loads will be experienced throughout the in-service life of the roof. Because of the elastic nature of most adhesives, static loading may show much earlier failure than the lab-tested dynamic failure loading. Information from both types of loading should be known to complete a proper design which should also include an appropriate safety factor.

A more thoroughly tested installation practice involves the use of mechanically attached snow guards that utilize a clamping method that grips the standing seam in some fashion without actually puncturing the panel material. Because this method

of attachment is mechanical rather than chemical, it is not subject to many of the previous concerns mentioned regarding the use of adhesives. Some mechanical attachment products utilize “cup point” set screws that may tear the seam material under load or damage panel coatings leading to premature corrosion. Other clamping products use round tipped setscrews to avoid this panel damage. Some use only one set screw, others use several. Again, appropriateness and completeness of lab testing should be scrutinized as well as the specific details of attachment before a final system choice is made.

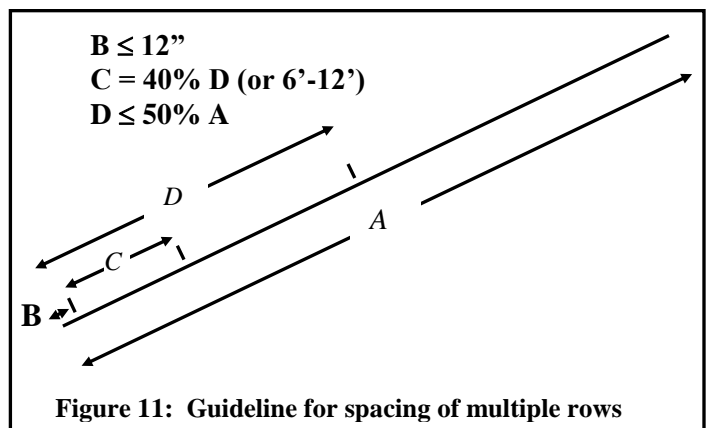
Load-to-failure testing results in the lab vary greatly depending upon variables such as the gauge of metal, specific type of product, and anchorage details. Results are highly contingent upon proper installation and the tensioning of attachment fasteners in strict accordance with the torque defined in the test protocol. While dynamic testing is generally appropriate for mechanical attachments, testing should be panel and in some cases project specific to minimize untested or inadequately tested devices in the field. Randomly, during device installation, screw tensions should be verified.

Other issues to be considered when using snow retention devices include verifying metal compatibility, matching corrosion resistance of the device being used with that of the panel material. In many cases, color matching should also be done. Devices that utilize air-dried paints to match the color of roof panels may provide a perfect match initially, but a poor match after weathering a few years. This is due to inferior characteristics of air-dried paints when compared to the factory applied finishes of metal panels. Powder coating will provide greater longevity in terms of color stability, but generally not equal to that of factory applied PVDF panel finishes.

During product selection, it will be necessary to evaluate the frequency of rows or spacing of devices on a job-specific basis. This is done by comparing the tributary service loads with the allowable load for the device being considered, and

spacing parts, or assemblies in accordance with those calculations. Using the previous example as illustrated by Figure 3, the vector load determined from the example was 1,023 pounds per linear foot along the point of fixity. If panels are 16” (1.33’) wide, then each panel will experience 1,364 pounds of force from design snow loads (1023 x 1.33). This is the same force that would be experienced by the snow guard devices. If a cleat type device is selected, and that device has allowable loads of 180 pounds for example, then 8 devices per panel would be required ( $1364 \div 180 = 7.6$ , rounded = 8). If a mechanically attached device is selected for use and that attachment has allowable loads of 850 pounds for example, then two rows would be required ( $1364 \div 850 = 1.6$ , rounded up = 2).

Where multiple rows of devices are needed, they are generally arranged within the lower half of the roof slope. The first row of units or cross-members should be located close to (within 12” of) the eave end of the panels. This is because at some point, the snow bank that envelops the snowguard will shear at the approximate location of the guard, and whatever portion of the bank is below the guard may fall from the roof. The size of this falling portion should be minimized for safety reasons. This 12-inch placement of the first row of snow guards can be obviated if the system utilizes heating cables at the eave area, in which case the snow guards should be located immediately upslope of that cabling (see Figure 7). Successive rows should be spaced approximately as shown by Figure 11.



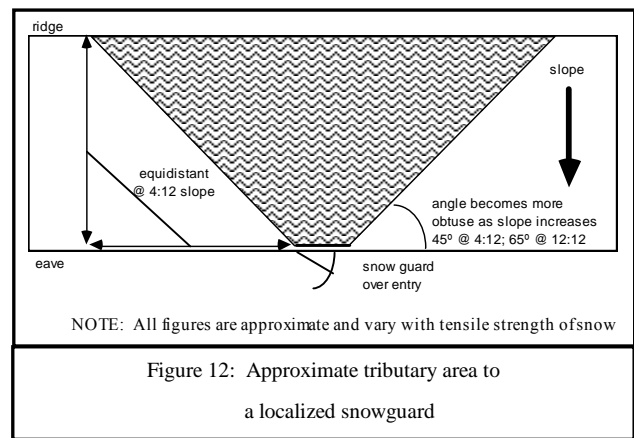


Such placement can also reflect some discretion with respect to aesthetic and other concerns. For example, it may be desirable to align a fence with other roof geometry like the apex or downslope termination of a row of dormers or skylights.

Because of the site-specific and product-specific nature of system design and integration, any plan callouts and project specifications should be product specific (proprietary spec) and as calculated. Any substitution should be indicated to demonstrate equivalence in terms of holding strength, or mathematically proven to be adequate by site-specific and product-specific factors.

In highly critical applications a minimum of two rows of parts or assemblies may be used, even though the math may show one row to be adequate. This is because under some circumstances, the compressive strength of a blanket of snow may be lacking causing the blanket to “buckle”. The loop of the buckled blanket may fold over the snow guard and potentially fall to the ground. Such conditions are rare, but have been observed, particularly with steep slopes and minimal accumulation of new fallen snow that is water-laden.

When snow guards are used at isolated locations such as over an entry door or to protect a stack or flue, care should be taken in calculating the tributary loads to the isolated assembly. The shape of a retained snow bank above such an assembly will generally resemble a wedge, and not a rectangle, hence tributary areas may be much larger than first anticipated. Adequacy of panel pinning should also be verified on panels to which such localized assemblies are attached. (Figure 12)



Devices that clamp onto panel seams may be used on alternating seams (manufacturer consenting), but should not be used any less frequently. A clamp that grips the seam will distribute loads to the pans at either side of the seam; hence uniform loading of panels still occurs when every other seam is skipped. This is not the case if a clamp is installed, for instance, at every third seam.

In order that thermal cycling characteristics of the roof are preserved, clamp-on devices should avoid panel attachment at clip locations, unless those clips are dual component clips.

## Summary

Metal roofing is a preferred material in cold climates because of its durability, sustainability, clean lines and attractive appearance. It can have a service life many times longer than that of other roof types. Adherence to these guidelines has proven beneficial toward trouble free serviceability over many years. Severe alpine climates may pose additional challenges not discussed herein. Consult with those experienced in alpine metal roof design when necessary for those special applications.

## References

- (1) MBMA Metal Roofing Systems Design Manual, 2<sup>nd</sup> Edition Chapter 6.1.3, 2013
- (2) MBMA Metal Roofing Systems Design Manual, 2<sup>nd</sup> Edition Chapter 7.6, 2013

Founded in 1983, the Metal Construction Association brings together the diverse metal construction industry for the purpose of expanding the use of all metals used in construction. MCA promotes the benefits of metal in construction through:

- Technical guidance
- Product certification
- Educational and awareness programs
- Advocating for the interests of our industry
- Recognition of industry-achievement awards
- Monitoring of industry issues, such as codes and standards
- Research to develop improved metal construction products
- Promotional and marketing support for the metal construction industry
- Publications to promote use of metal wall and roof products in construction

For more information, please visit the MCA Web site at [www.metalconstruction.org](http://www.metalconstruction.org)

Copyright © 2014 Metal Construction Association. All rights reserved.

No part of this publication may be reproduced in any form or by any means, including photocopying, or utilized by any information storage or retrieval system without permission of the copyright owner.

This bulletin is for general information only. The bulletin is designed to delineate areas requiring consideration. Information contained in the bulletin should not be used without first securing competent advice with respect to its suitability for any given application. MCA does not assume responsibility and disclaims any representation or warranty, express or implied, that such information is suitable for any general or particular use. Anyone making use of the bulletin assumes all liability resulting from such use.

The existence of the bulletin does not in any respect preclude a member or nonmember of MCA from manufacturing, selling, or specifying products not conforming to the bulletin, nor does the existence of an MCA bulletin preclude its voluntary use by persons other than MCA members. The bulletin does not purport to address all safety problems associated with its use or all applicable regulatory requirements. It is the responsibility of the user of the guideline to establish appropriate safety and health practices and to determine the applicability of regulatory limitations before use of the bulletin.

The Metal Construction Association reserves the right to change, revise, add to, or delete any data contained in the bulletin without prior notice.

It is the responsibility of the end user to verify the applicability of this information with the local building and fire officials.

© 5/2014

METAL CONSTRUCTION ASSOCIATION

8735 W. Higgins Road, Suite 300, Chicago, IL 60631

847.375.4718 | [mca@metalconstruction.org](mailto:mca@metalconstruction.org) | [www.metalconstruction.org](http://www.metalconstruction.org)

BUILD LEGACIES  
 METAL